



TK International  
020 7794 8700  
www.t-k.co.uk

Residential Sales  
Residential Lettings  
Property Management

Sales Office:  
9 Heath Street  
Hampstead  
London NW3 6TP  
E: sales@t-k.co.uk

Lettings Office:  
16-18 Heath Street  
Hampstead  
London NW3 6TE  
E: lettings@t-k.co.uk

tk.international  
TK International  
TK International

Est.  
1998



## **Spencer Walk Hampstead Village NW3**

Situated within this highly sought after gated community in the heart of Hampstead Village, a remarkably spacious two double bedroom, two bathroom ground floor modern apartment with exclusive use of a 42' width patio garden, plus the enviable benefit of underground parking, which can be accessed via a communal lift.

The apartment enjoys generously proportioned accommodation throughout including a 27'9" double aspect reception room with direct access to both the rear patio garden and a private terrace to the front, an approx. 16' principal bedroom with ensuite bathroom, a further double bedroom with ensuite shower room, a modern galley kitchen and separate utility room, plus a guest WC.

Spencer Walk is centrally located amongst the restaurants, boutiques and amenities Hampstead High Street has to offer including Hampstead Underground Station (Northern Line), and within a short stroll of the vast expanses of Hampstead Heath.

**£1,350,000**

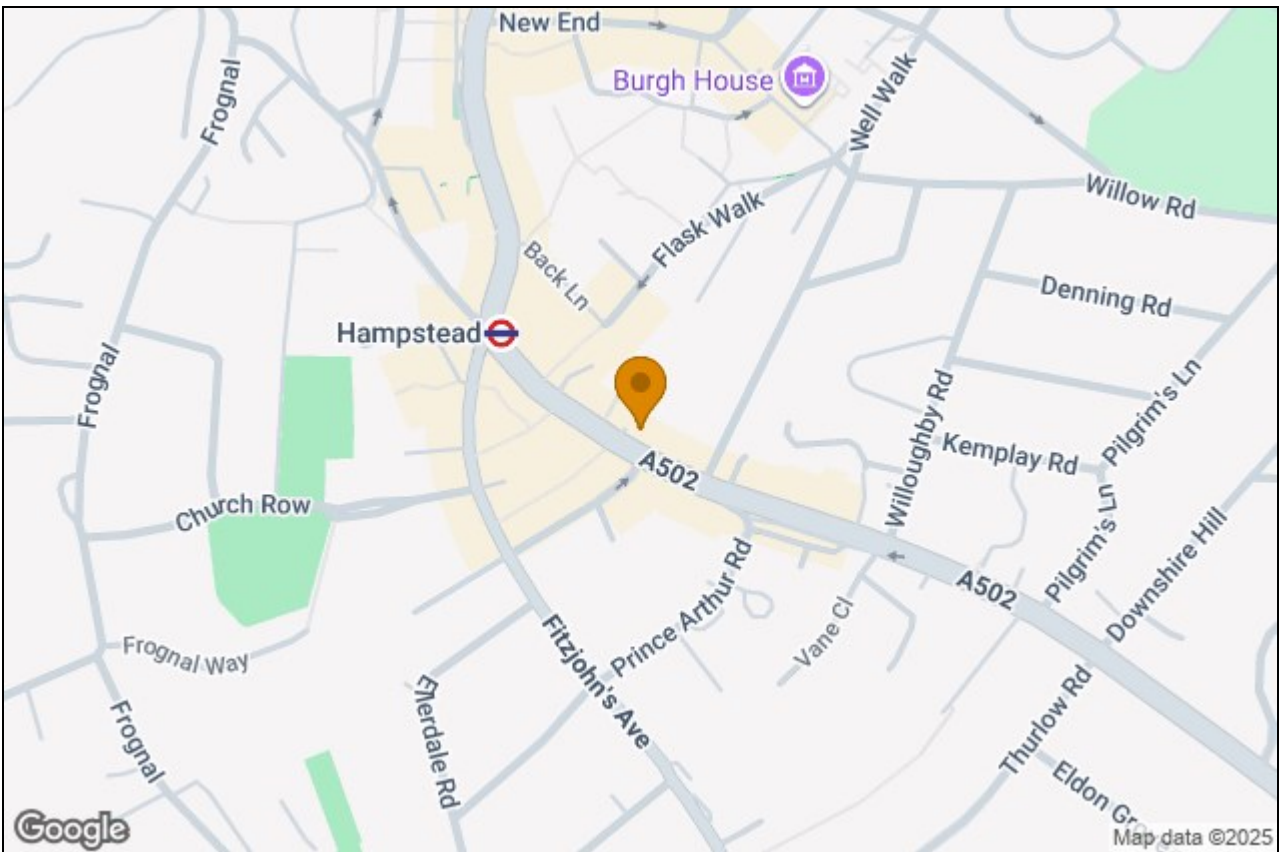
**SOLE AGENT**

**Leasehold**







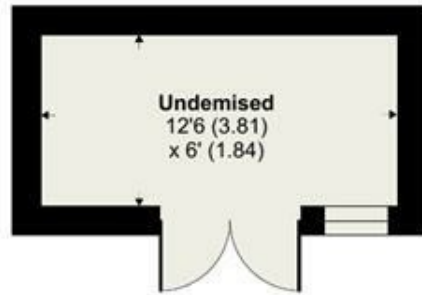


# Spencer Walk, Hampstead, NW3

Approximate Area (excluding outbuilding) = 1131 sq ft / 105 sq m

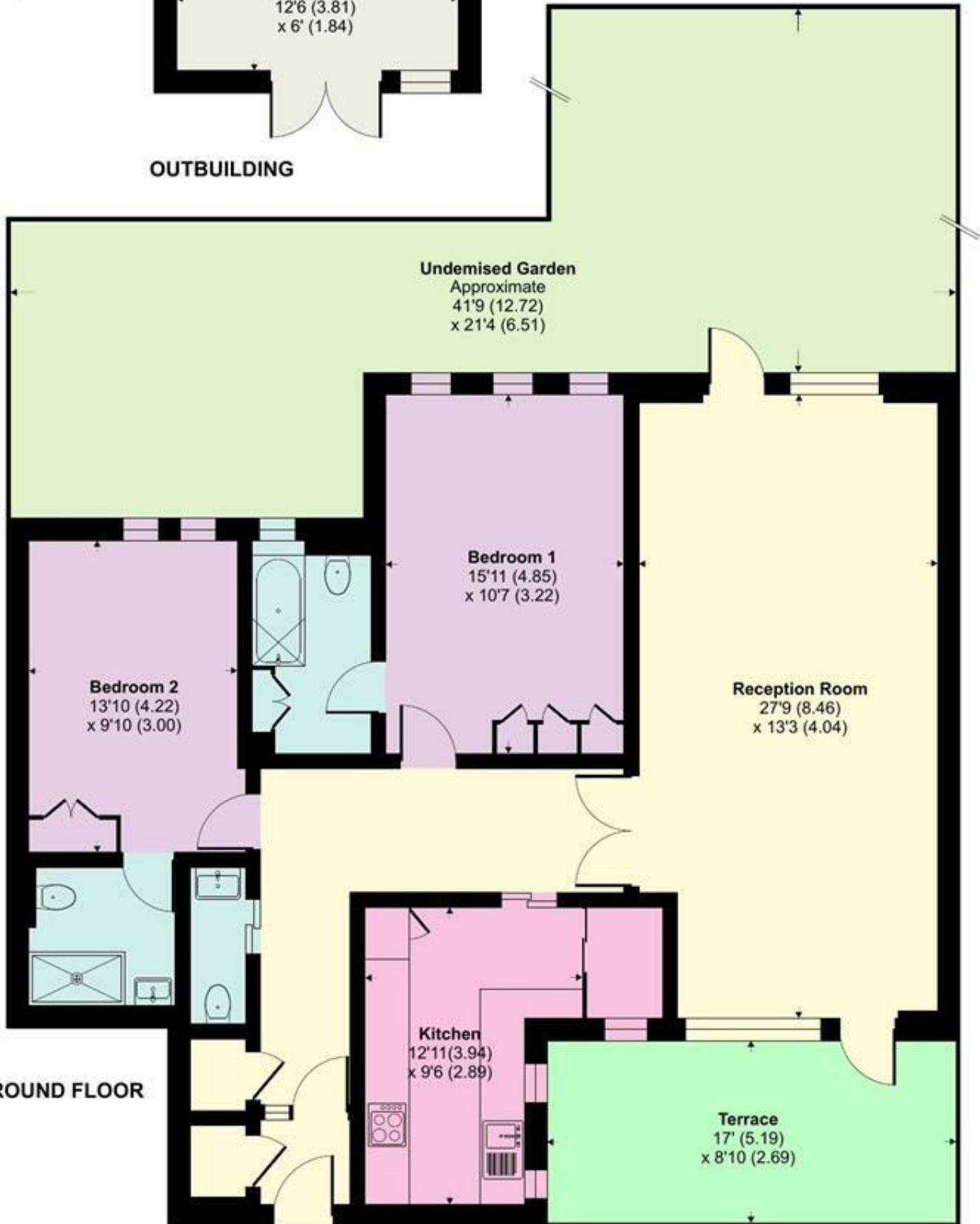
Outbuilding = 75 sq ft / 6.9 sq m

For identification only - Not to scale



**Undemised**  
12'6 (3.81)  
x 6' (1.84)

**OUTBUILDING**



**Undemised Garden**  
Approximate  
41'9 (12.72)  
x 21'4 (6.51)

**Bedroom 1**  
15'11 (4.85)  
x 10'7 (3.22)

**Bedroom 2**  
13'10 (4.22)  
x 9'10 (3.00)

**Reception Room**  
27'9 (8.46)  
x 13'3 (4.04)

**Kitchen**  
12'11 (3.94)  
x 9'6 (2.89)

**Terrace**  
17' (5.19)  
x 8'10 (2.69)

**GROUND FLOOR**



Floor plan produced in accordance with RICS Property Measurement 2nd Edition, Incorporating International Property Measurement Standards (IPMS2 Residential). © nichecom 2025. Produced for TK (Hampstead) Ltd. REF: 1334856